

# Bersatu teguh / The Church that Is One

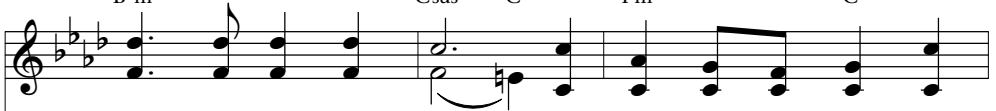
Capo 1 (Em)  
Fm



*Indonesian* 1 Ber - sa - tu te - guh, te - gak dan ku - kuh Ge -  
*English* 1 The church that is one in love of the Son is  
2 O Lord, come and plant de - sire in our hearts to  
3 Make those now es - tranged re - pent and be changed to



(Am) (Bsus) (B) (Em) (B)  
B<sup>2</sup>m Csus C Fm C



re - ja yang E - sa. Ber - nya - nyi mer - du, gem -  
strong, com - mit - ted, true. Her voice full of joy, her  
dwell in u - ni - ty. We'll learn to join hands and  
com - pa - nies of friends. The light from your face is



(Em) (B) (Am) (Em)  
Fm C B<sup>2</sup>m Fm



bi - ra s'la - lu pu - ji na - ma Tu - han.  
song un - al - loyed, she chants the name of God.  
form her - ald bands to lift up high your name.  
sun - shine of grace and lamp of u - ni - ty.



2 Tanamkan seg'ra di dalam iman  
rasa persatuan.  
Maju bersama bergandeng tangan  
dalam nama Tuhan.

3 Berkati Tuhan persekutuan  
Di dalam namaMu  
Anugrah Tuhan pelita terang  
Untuk persatuan.